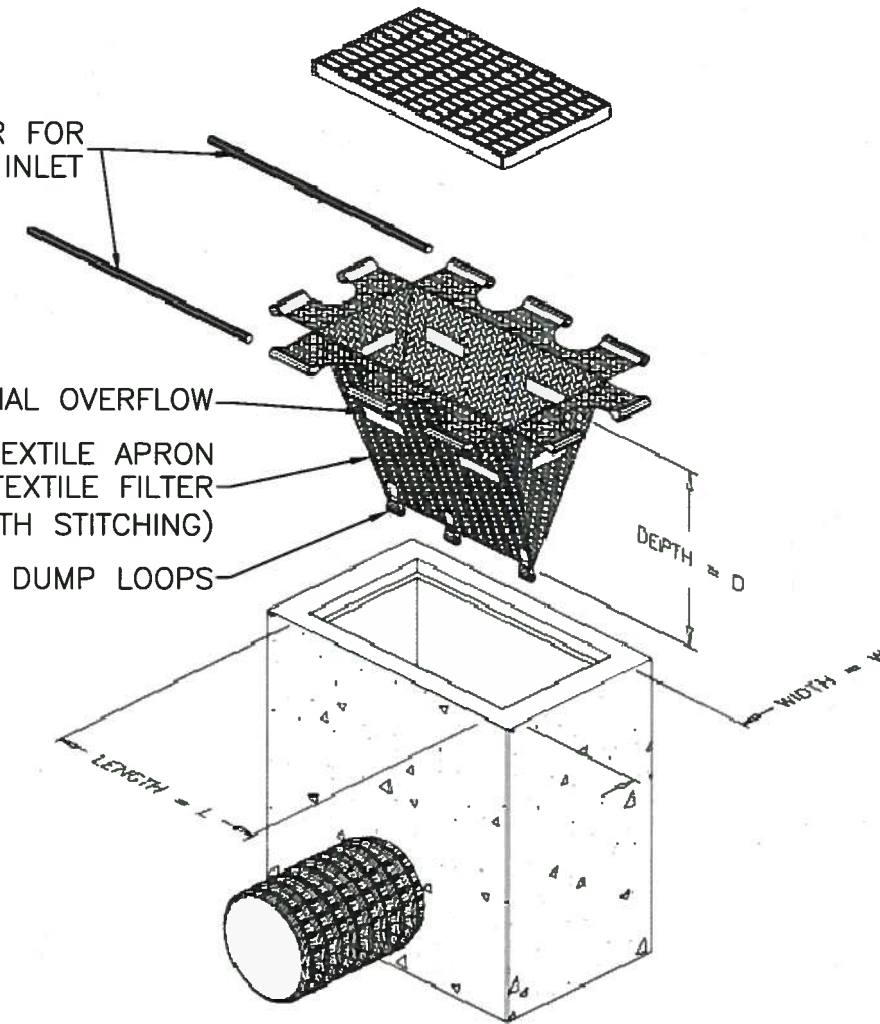


INSERT 25mm REBAR FOR
BAG REMOVAL FROM INLET

OPTIONAL OVERFLOW

NON-WOVEN GEOTEXTILE APRON
ATTACHED TO GEOTEXTILE FILTER
SACK (HIGH STRENGTH STITCHING)

DUMP LOOPS



NOTE:

1. FILTER FABRIC TO BE INSPECTED BI-WEEKLY AND REPLACED BY THE OWNER WHEN THE SILT BAG (OR SILT SACK) IS 50% FULL OF SEDIMENT.
2. THIS STANDARD SHOULD BE USED DURING ROAD CONSTRUCTION.
3. THE USE OF TERRAFIX SILT SACK IS REQUIRED. THE USE OF ANY EQUIVALENT PRODUCT IS SUBJECT TO APPROVAL BY THE DIRECTOR OF ENGINEERING.



ENGINEERING DEPARTMENT

DRAWING NAME:

STREET CATCHBASIN
SEDIMENT TRAP DETAIL

SCALE: NTS

REV: 1.

DATE:
AUGUST 2012

APPROVED BY:

[Signature]
DIRECTOR OF ENGINEERING

DWG. NO.

MP5